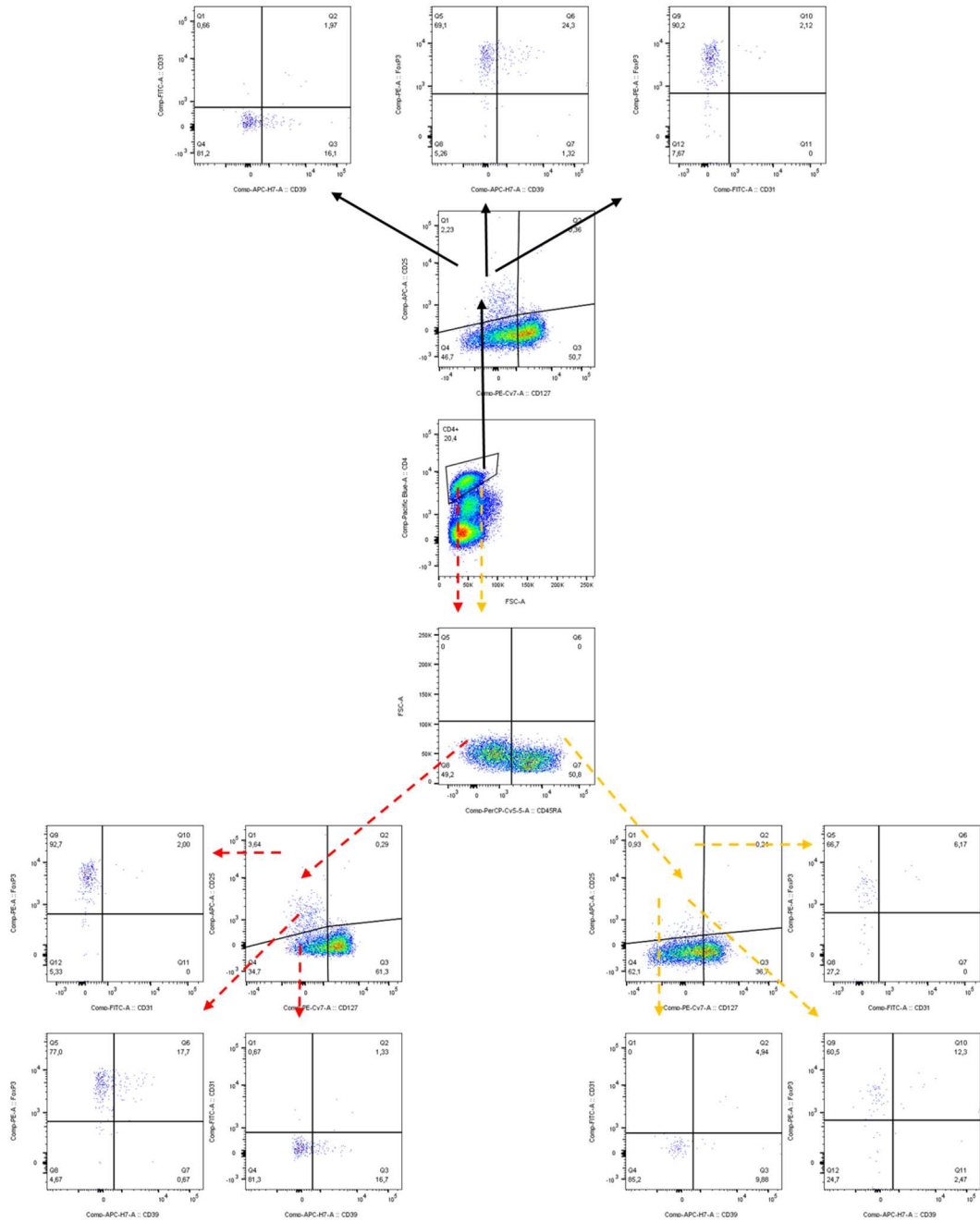
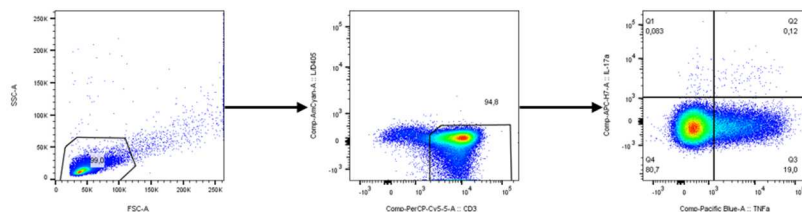


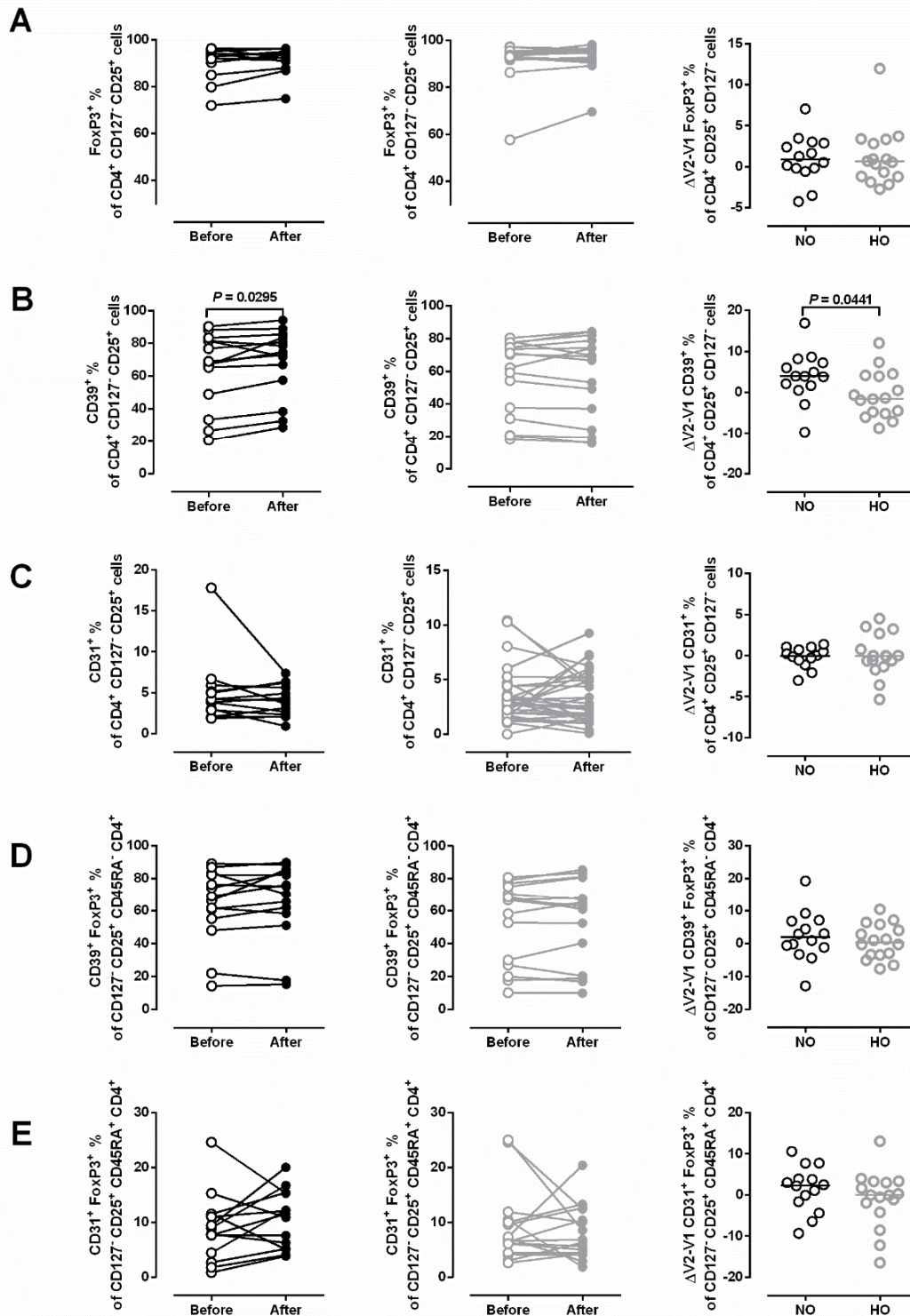
A



B

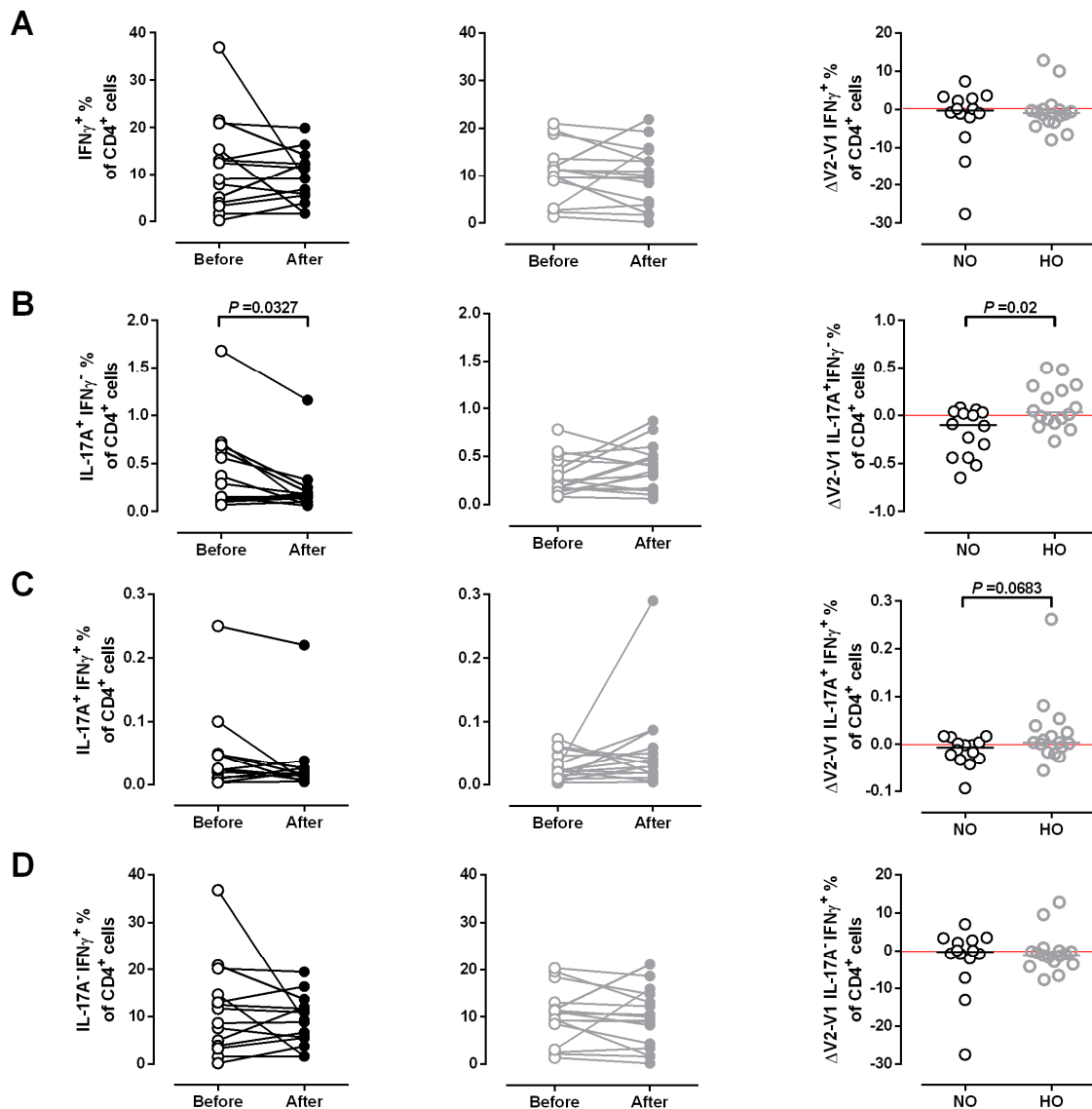


Suppl. figure 1. Gating strategies of (A) Treg populations and (B) TNF α and IL-17A producing cells



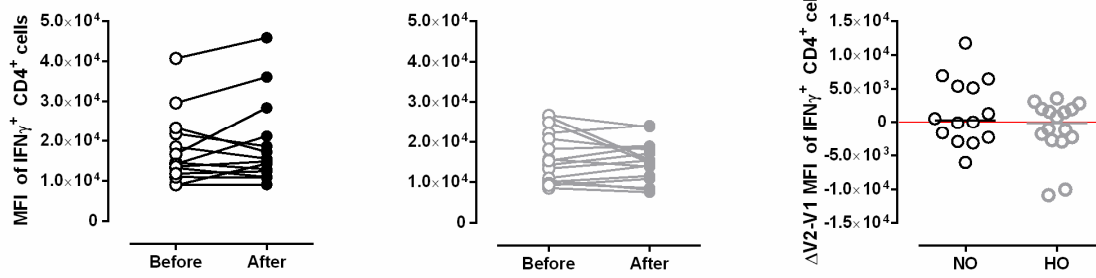
Suppl. figure 2. Frequencies of different Treg populations

(A) FoxP3⁺, (B) CD39⁺ and (C) CD31⁺ of CD4⁺ CD127⁻ CD25⁺ cells. (D) CD39⁺ FoxP3⁺ of CD127⁻ CD25⁺ CD45RA⁻ CD4⁺ cells. (E) CD31⁺ FoxP3⁺ of CD127⁻ CD25⁺ CD45RA⁺ CD4⁺ cells. All in MS patients after 4 weeks of normoxic (NO, n = 16, black circles) and hypoxic (HO, n = 14, grey circles) treadmill training. Three samples not analyzed due to quality issues. Comparison of training effects (Δ V2-V1, right column). *P* values before vs. after training by Student's paired t test or Wilcoxon matched-pairs signed rank test. *P* values NO vs. HO by Mann-Whitney U test or Student's t test



Suppl. figure 3. Frequency of IL-17A and IFN- γ producing T cells

Frequencies of (A) total IFN- γ ⁺, (B) IL-17A⁺ IFN- γ ⁻, (C) IL-17A⁺ IFN- γ ⁺ and (D) IL-17A⁻ IFN- γ ⁺ of CD4⁺ cells in MS patients after 4 weeks of normoxic (NO, n = 16, black circles) and hypoxic (HO, n = 14, grey circles) treadmill training. Three samples not analyzed due to quality issues. Comparison of training effects (Δ V2-V1, right column). *P* values before vs. after training by Student's paired t test or Wilcoxon matched-pairs signed rank test. *P* values NO vs. HO by Mann-Whitney U test or Student's t test



Suppl. figure 4. Median fluorescence intensity of IFN- γ -producing CD4⁺ T cells

Median fluorescence intensity (MFI) corresponding to the IFN- γ -labelling of CD4⁺ cells in MS patients after 4 weeks of normoxic (NO, n = 16, black circles) and hypoxic (HO, n = 14, grey circles) treadmill training. Three samples not analyzed due to quality issues