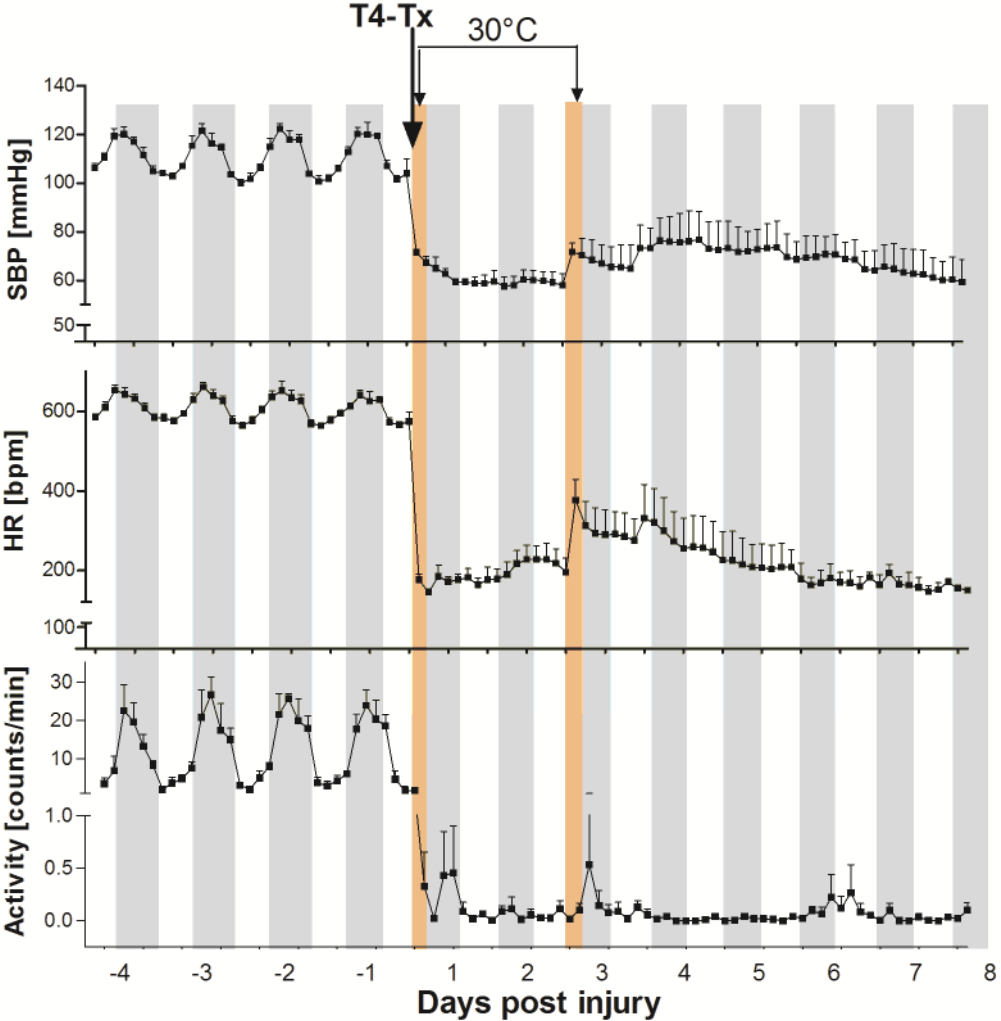


Supplementary Fig. 1

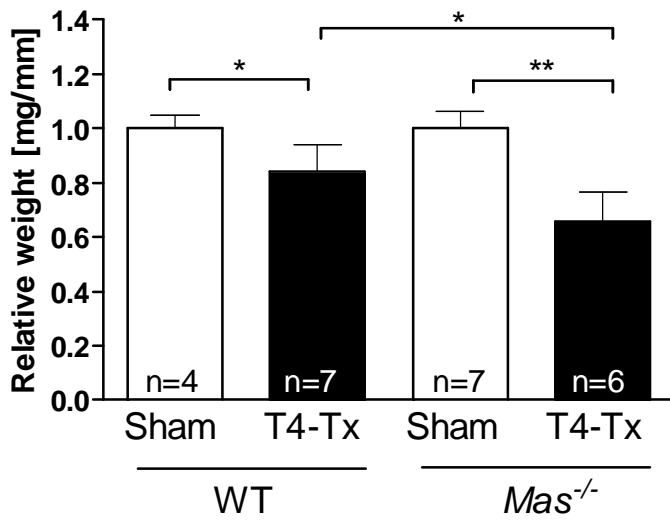


**Supplementary Figure 1.** A pilot telemetry experiment to monitor systolic blood pressure (SBP), heart rate (HR) and locomotor activity in the cage prior to and after T4-Tx in the WT mice. Time at which the cages were temperature-controlled (temperature in the cages 30°C) is indicated with orange bars and arrows. Mean values of 3 hours are presented. WT n=4. bpm, beats per minute. Night-time is marked with gray bars.

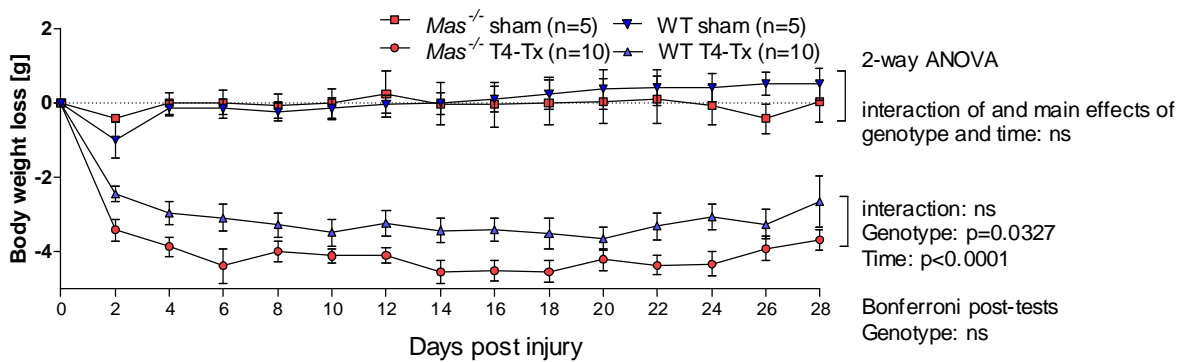
Supplementary Fig 2.

A

**Gastrocnemius and plantaris muscle**



B



**Supplementary Fig 2.** (A) Skeletal muscle atrophy after T4-Tx. Weights of Gastrocnemius and plantaris muscle determined at 28 days after surgery in wild type and *Mas*<sup>-/-</sup> mice. Muscle weight in [g] was normalized to tibia length in [mm]. Data are presented as mean +/- SEM. \*p<0.05, \*\*p<0.01. (B) *Mas*<sup>-/-</sup> mice lost significantly more body weight when compared to wild type mice. ns, not significant.