

Supplementary figures

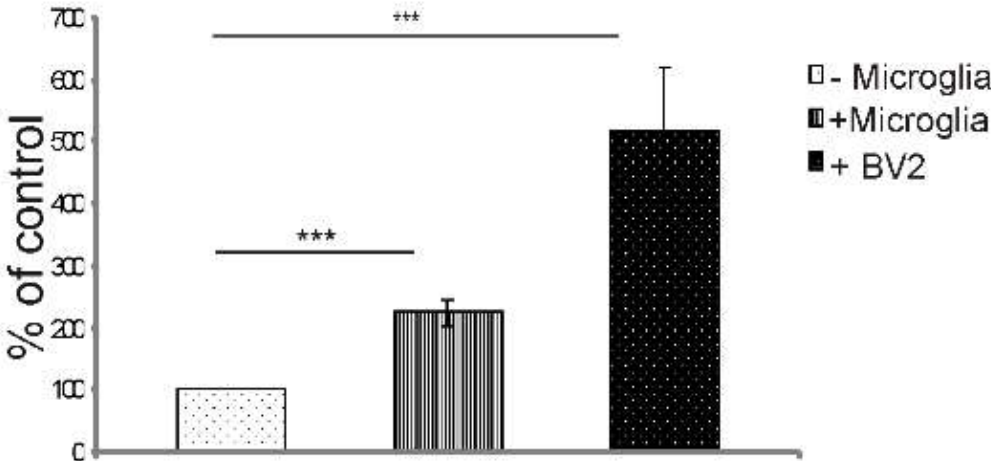


Figure S1. Microglia-dependent invasion of human LN18 glioblastoma cells. Glioma invasion was determined without or with primary microglia or BV2 co-cultures. Data are presented as means \pm s.d.; statistical significance was analysed by ANOVA, *** $p < 0.001$, $n = 3$, in triplicates.

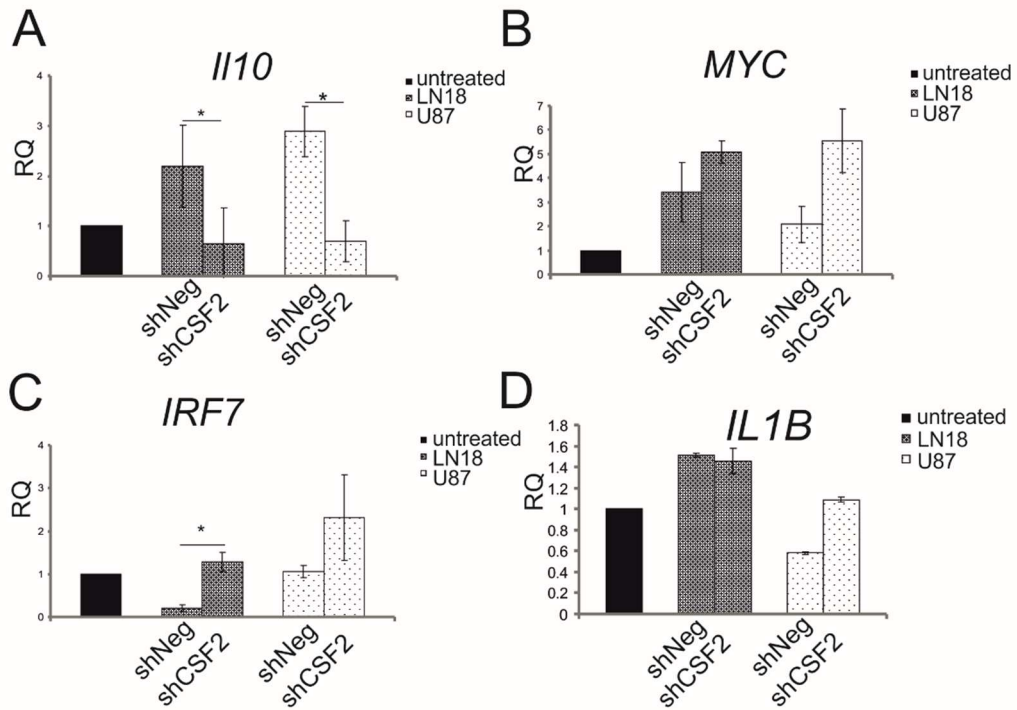


Figure S2. Glioma cells polarize human microglia towards the immunosuppressive phenotype. The relative expression of *IL10*, *MYC* (A,B) and *IRF7*, *IL1B* (C,D) genes was determined using qPCR in primary human microglia cultures treated with shNeg and shCSF2 glioma-conditioned media (GCM) (means \pm s.d.; 2 independent experiments, in triplicates; * $p < 0.05$).

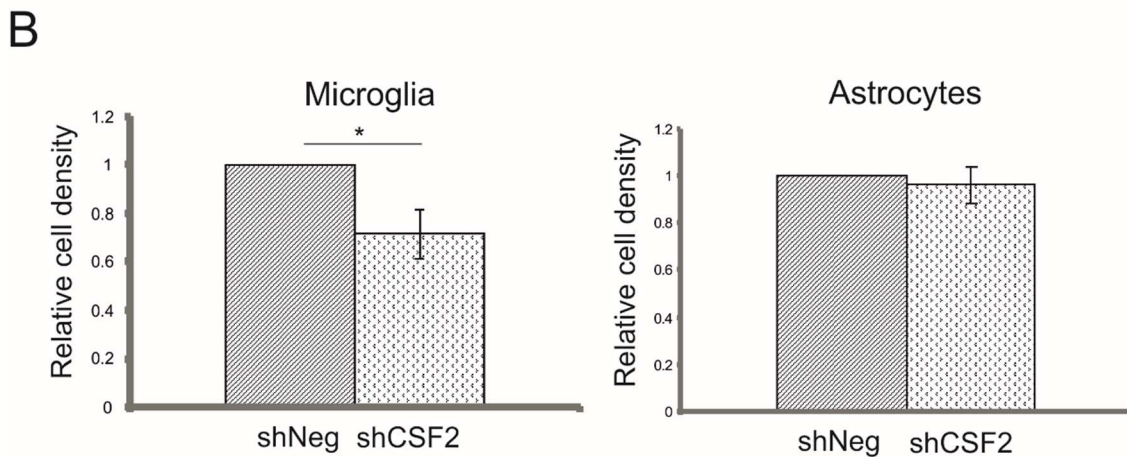
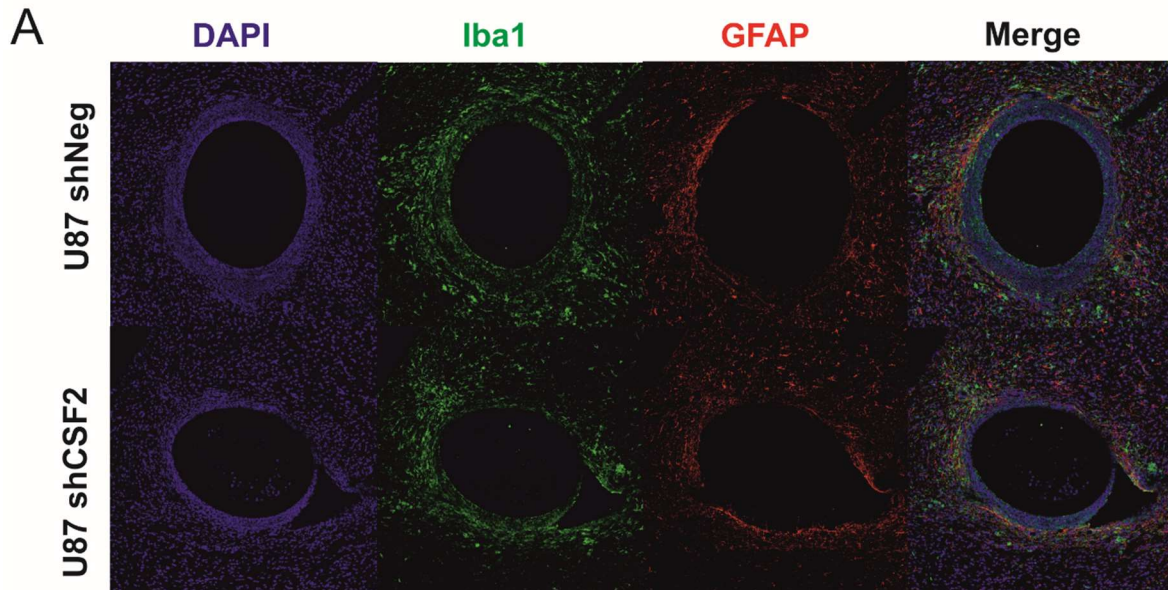


Figure S3. Microglia/macrophage recruitment in CSF2-depleted U87 gliomas. **A** Brain sections with shNeg and CSF2 depleted U87 gliomas (shCSF) encapsulated into hollow fibres were stained with anti-Iba1 (green) and anti-GFAP (red). **B** Quantification of Iba1⁺ and GFAP⁺ cells was performed as described.