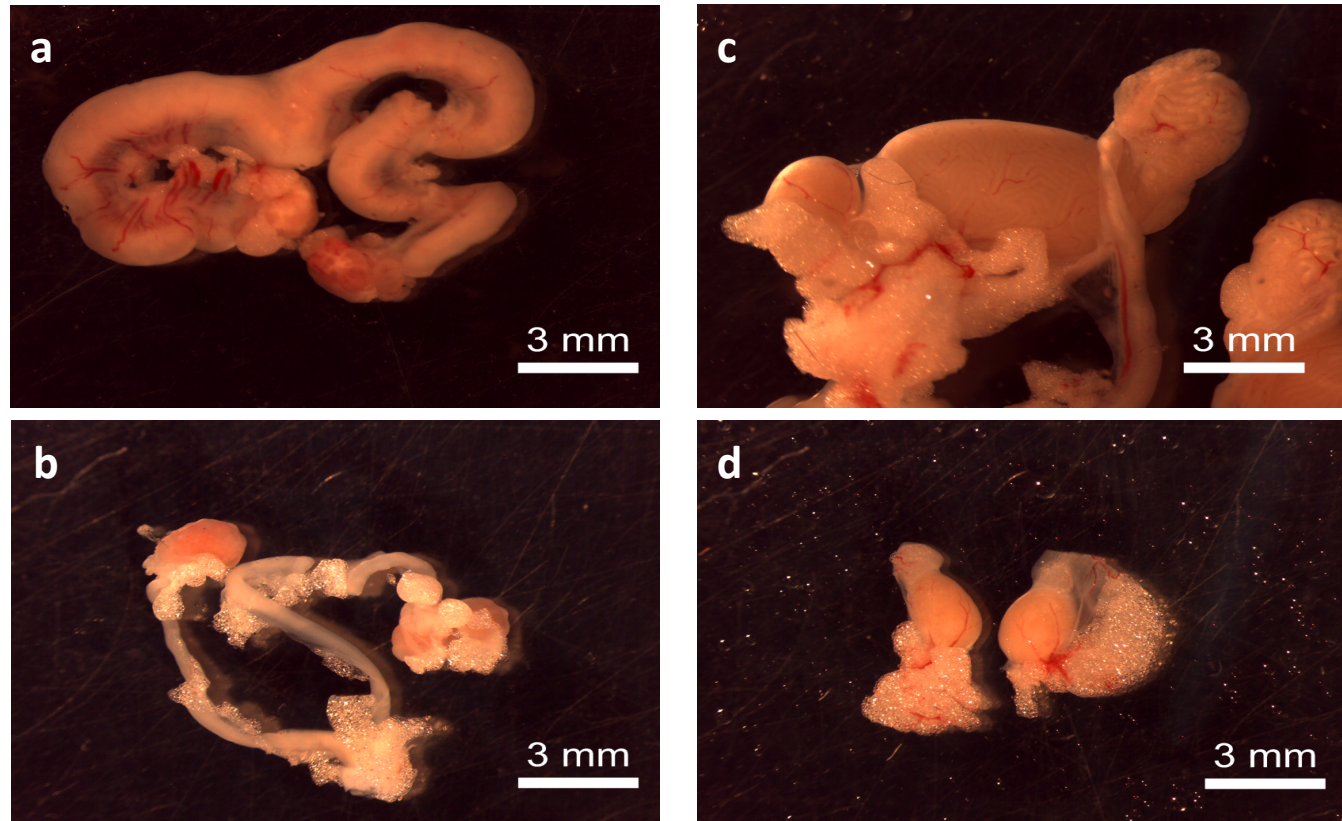


CYP17A1 deficient XY mice display susceptibility to atherosclerosis, altered lipidomic profile and atypical sex development

Redouane Aherrahrou^{a,b}, Alexandra E. Kulle^c, Natalia Alenina^{d,e}, Ralf Werner^{f,g}, Simeon Vens-Cappell^h, Michael Bader^{d,e,i,j}, Heribert Schunkert^k, Jeanette Erdmann^{a,l,*}, Zouhair Aherrahrou^{a,l,*}



Supplementary Figure 4: Comparison of inner genitalia of six month old mice. (A) Uteri and ovaries of a WT mouse. (B) Uteri and ovaries of a *Cyp17a1* KO mouse. (C) Testis of a WT mouse. (D) Testes of a *Cyp17a1* KO mouse.