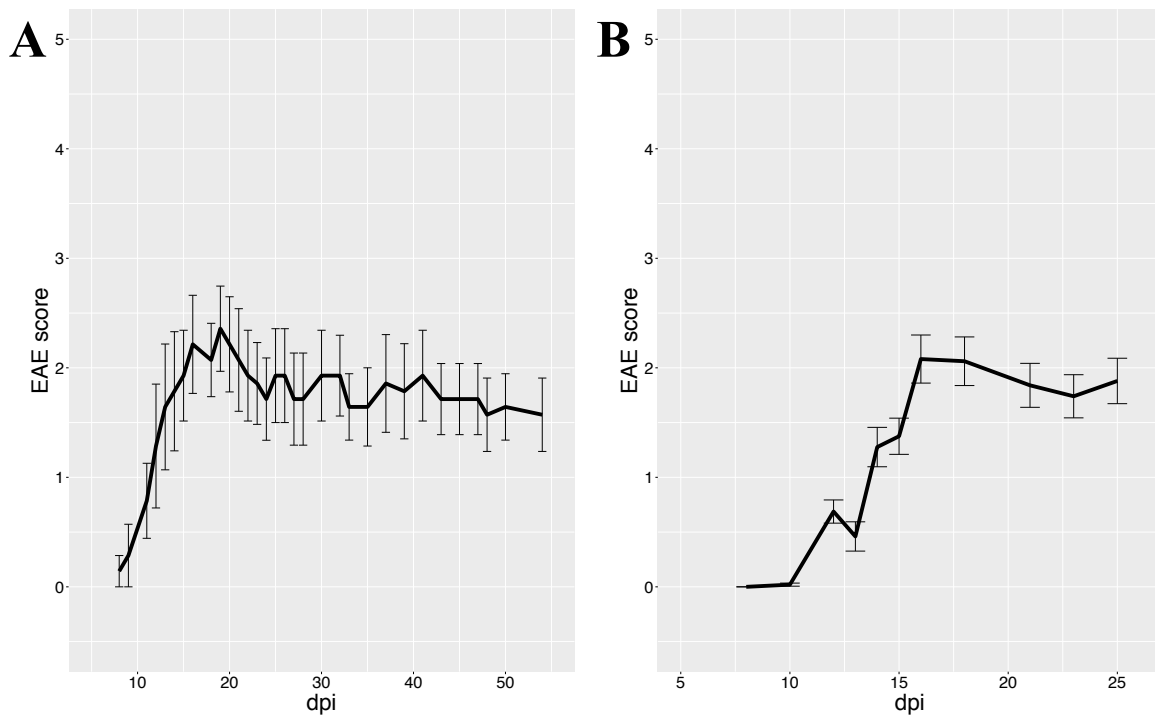
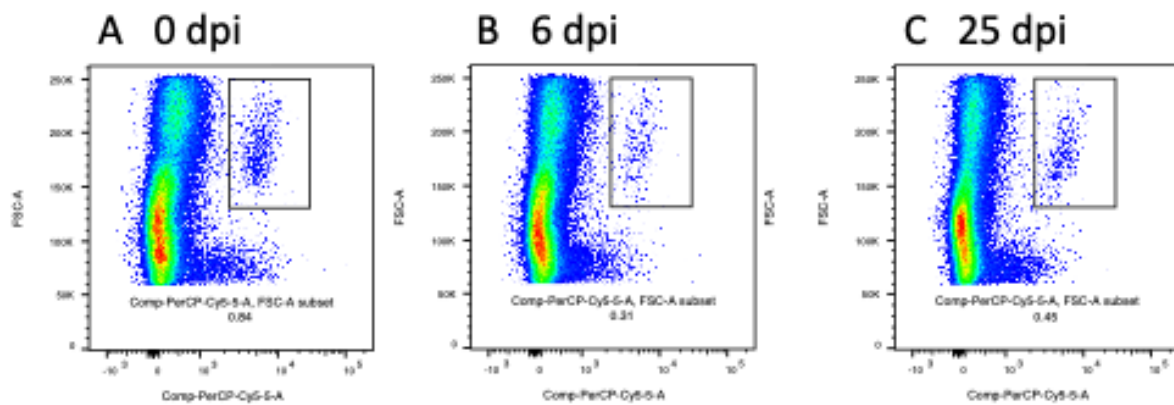


Supplement



Supplementary figure 1: EAE scores for mice included in A) longitudinal imaging (CSLO, OCT) and histopathological analyses and B) genomics analyses. All results displayed as mean \pm standard error.



Supplementary figure 2: Cells were sorted by FACS and live single cells were selected based on forward scatter (FSC) width, side scatter (SSC) width, and live/dead exclusion. On FSC/SSC plots, live cells were evaluated for PerCP/Cy5-CD11b.