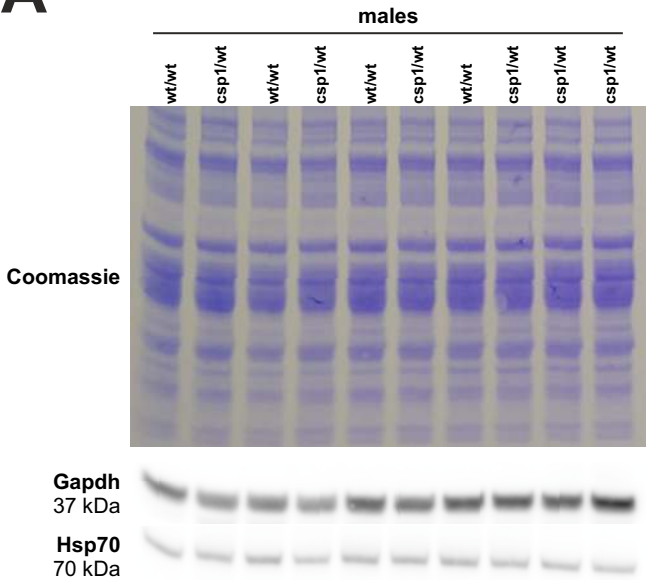


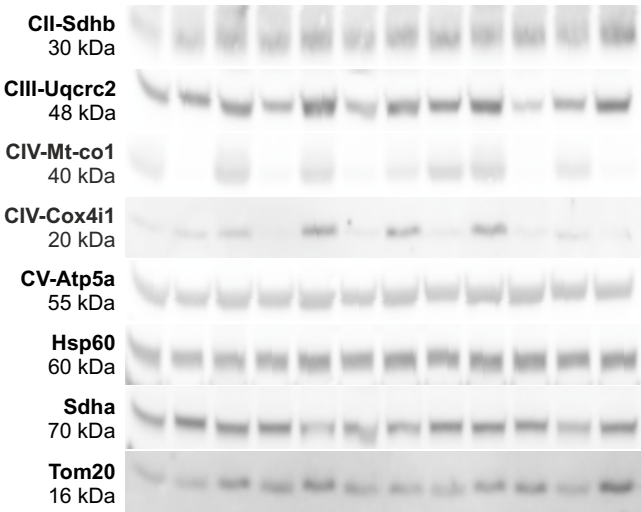
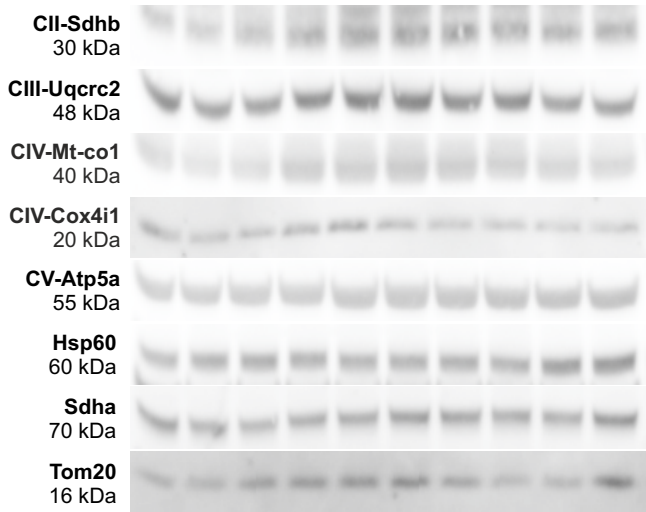
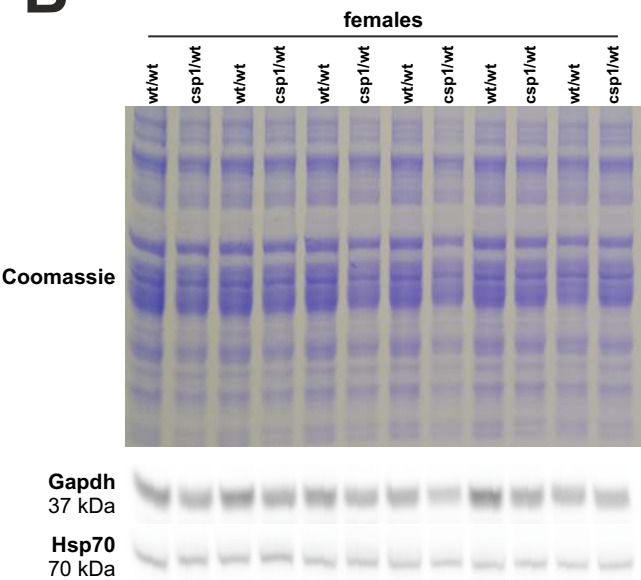
Supplement to Figure 4E-F, page 1
Protein analysis Prdm16csp1/wt 8M

■ male *Prdm16*^{wt/wt} ■ male *Prdm16*^{csp1/wt} ■ female *Prdm16*^{wt/wt} ■ female *Prdm16*^{csp1/wt}

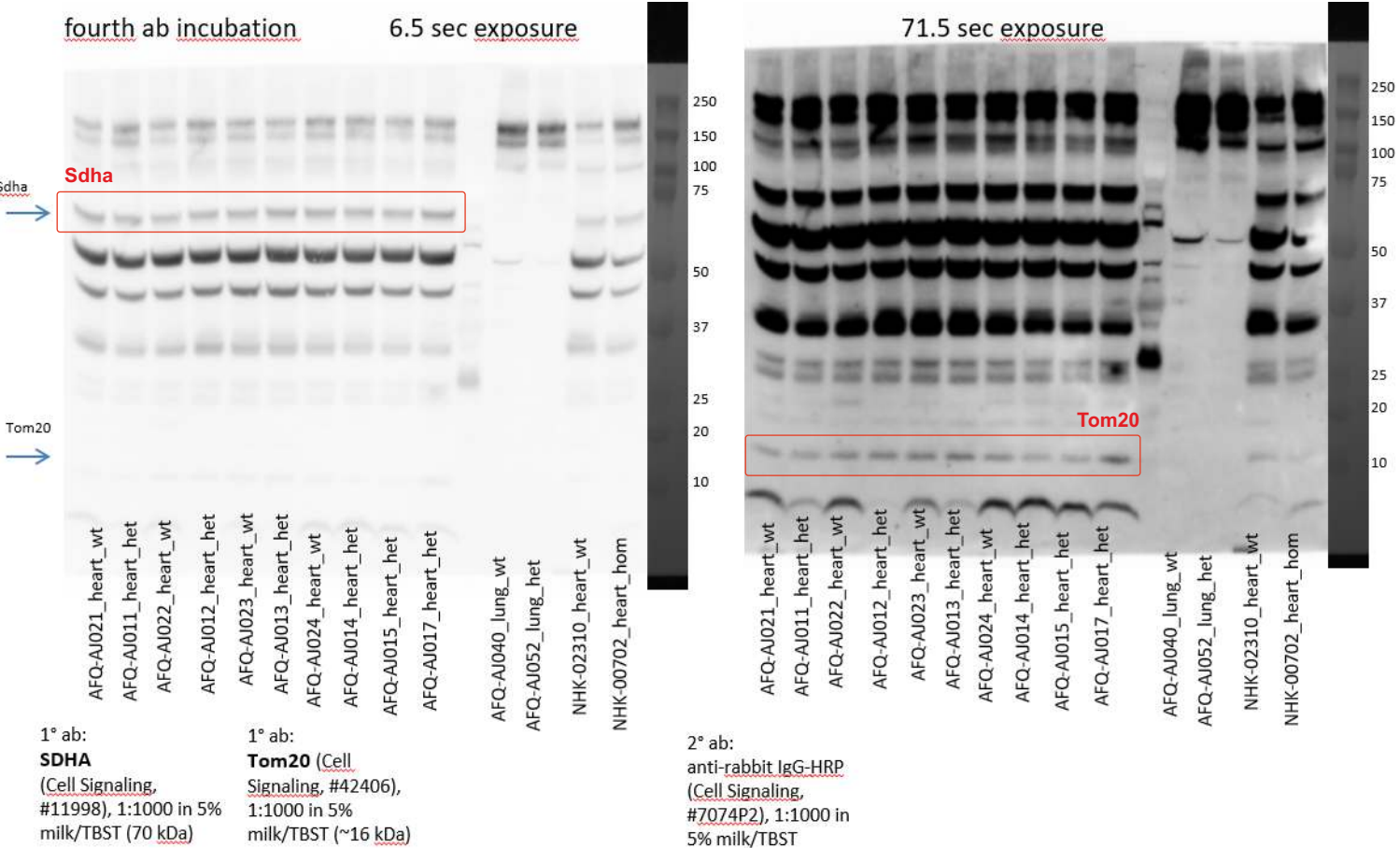
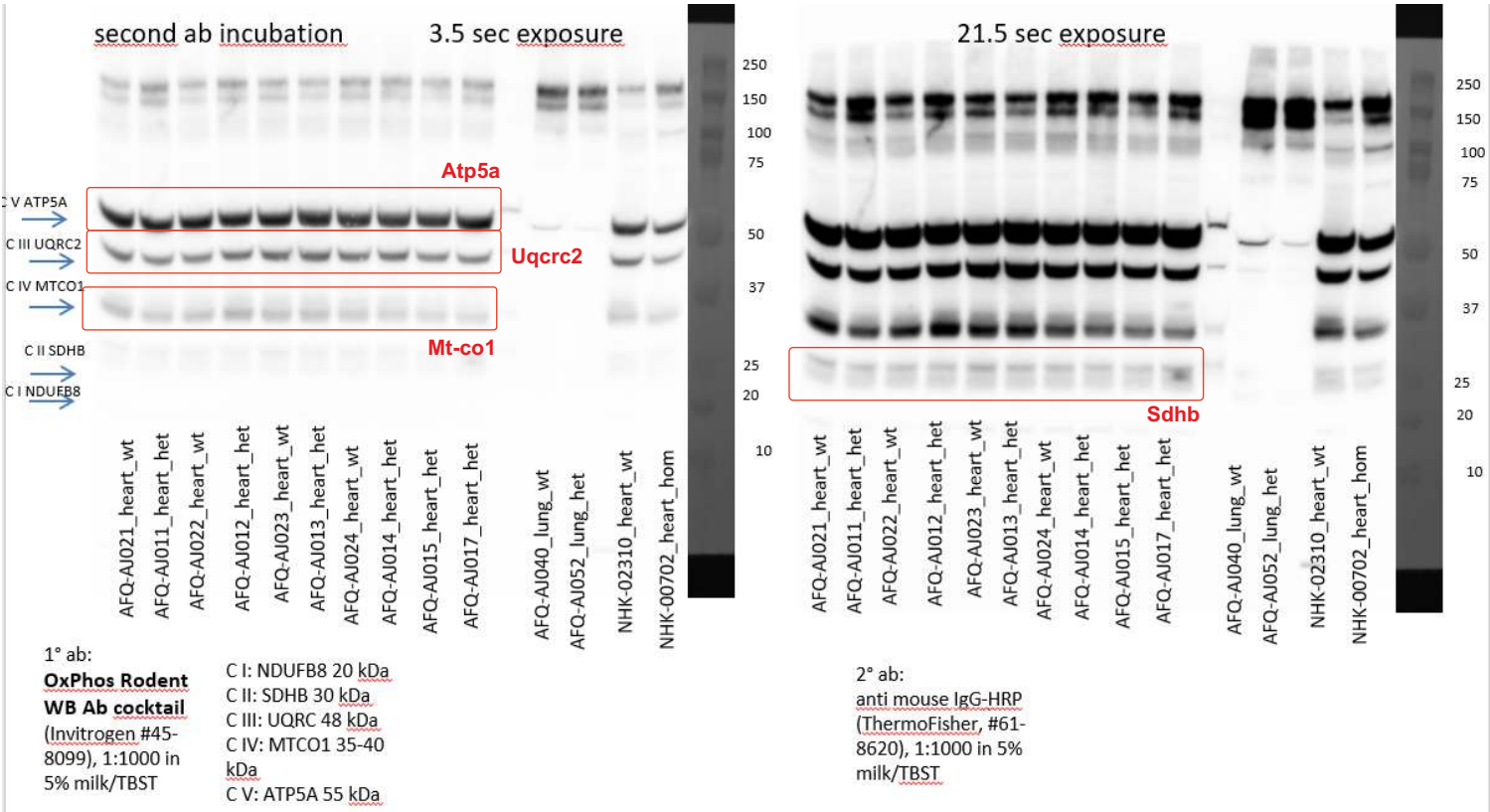
A Protein analysis male *Prdm16*^{csp1/wt}



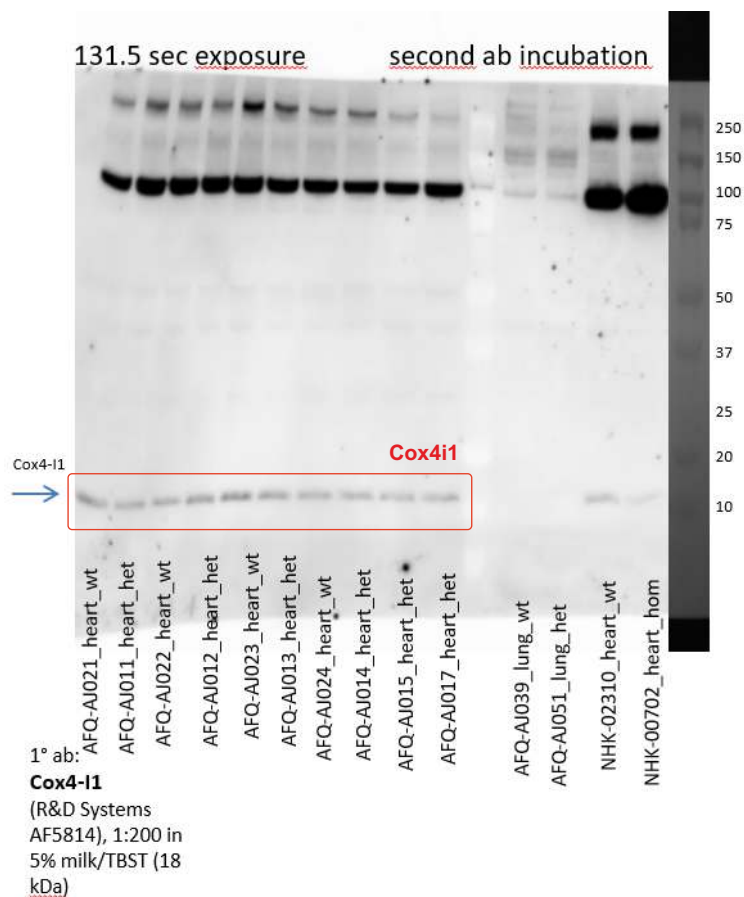
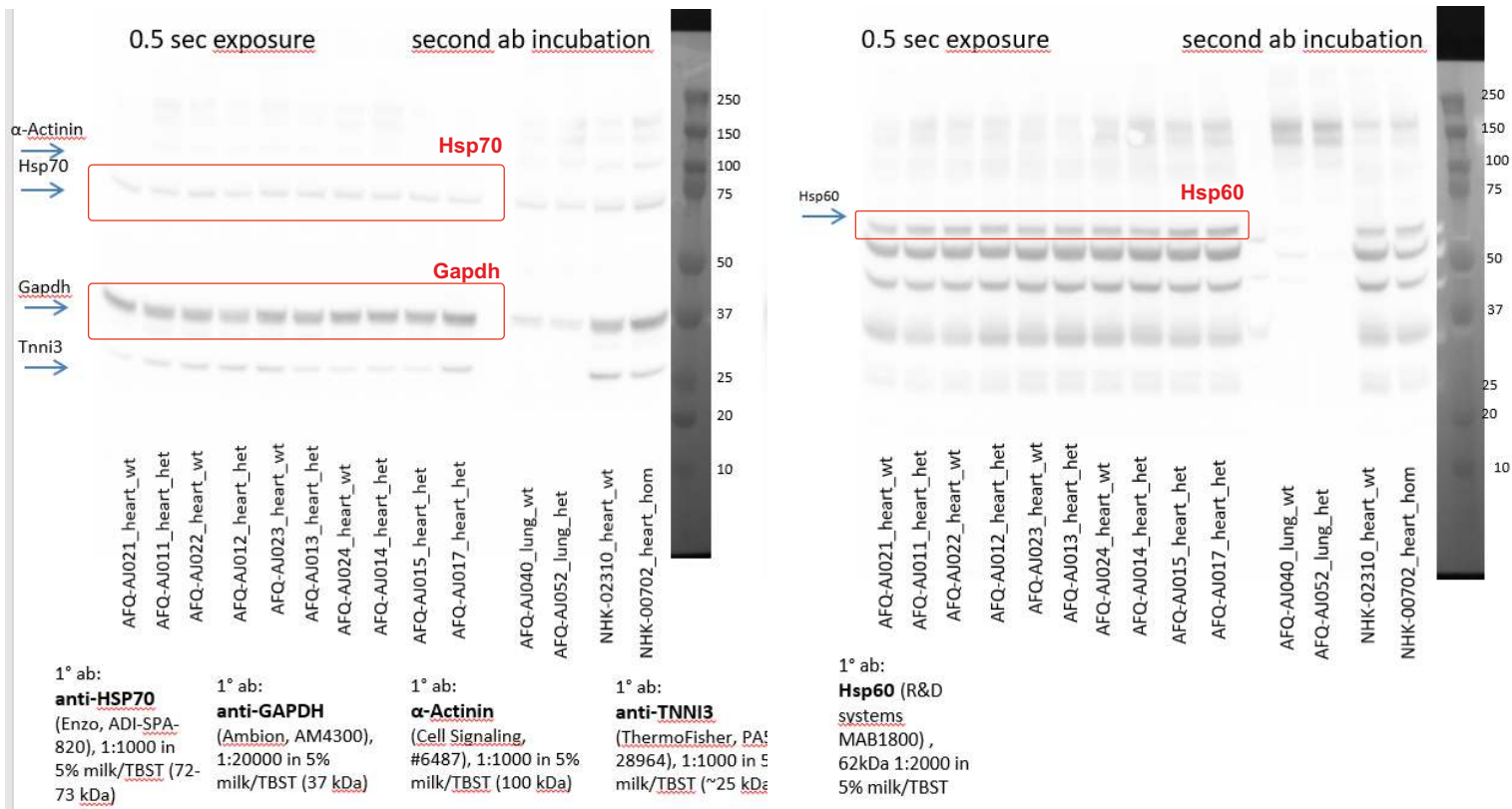
B Protein analysis female *Prdm16*^{csp1/wt}



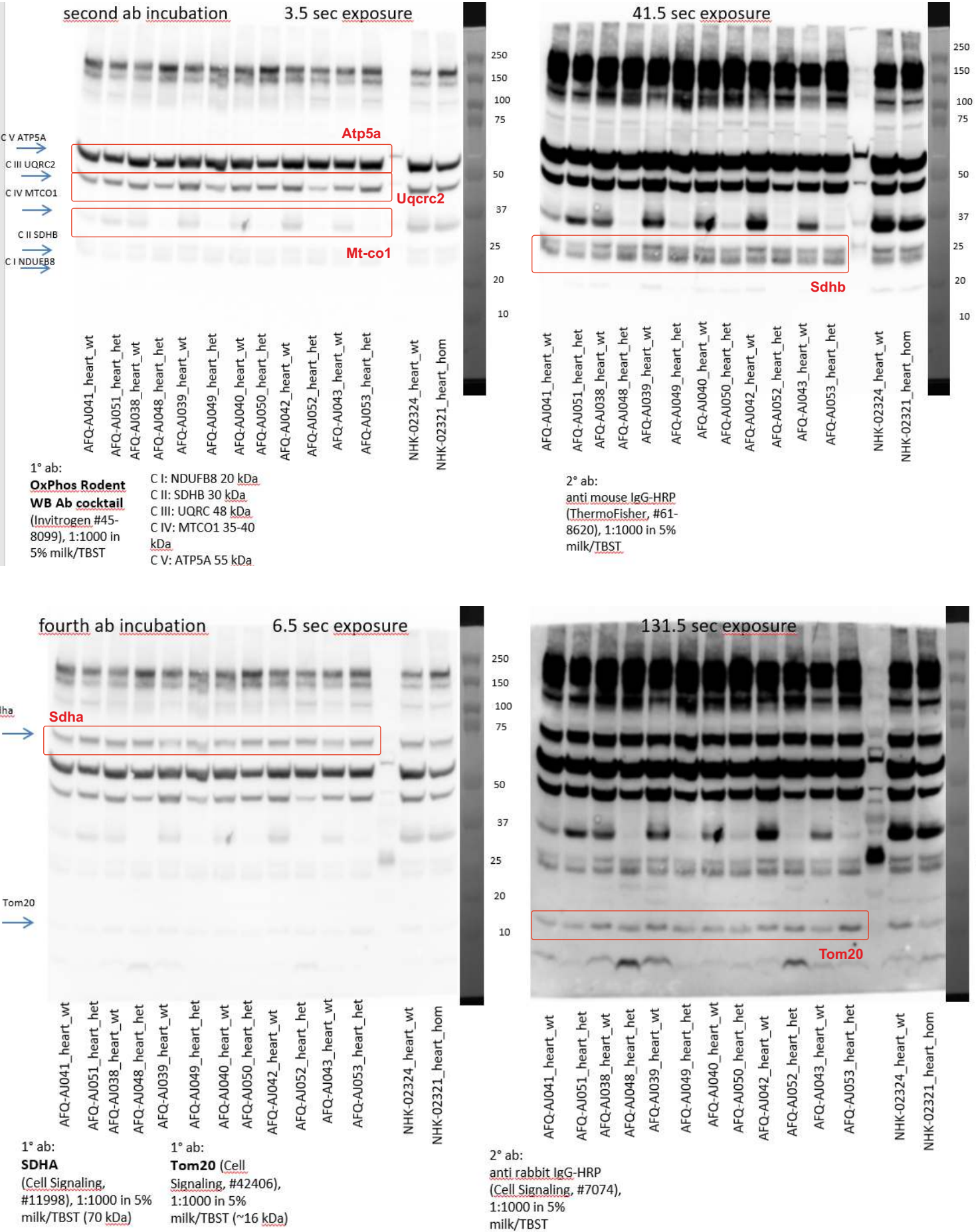
Supplement to Figure 4E-F, page 2 Original Western blots Prdm16csp1/wt, males, 8 months



Supplement Figure 4E-F, page 3
Original Western blots Prdm16csp1/wt, males, 8 months

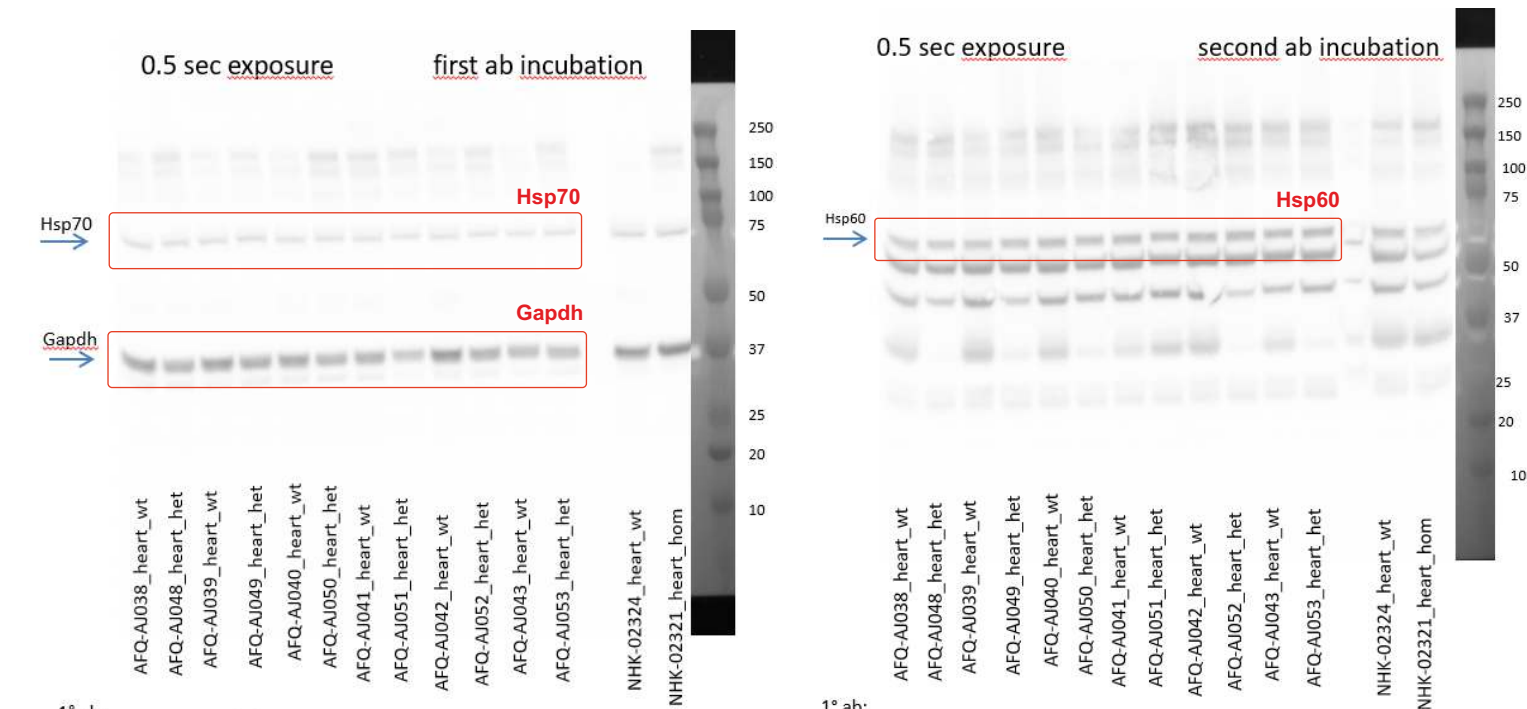


Supplement Figure 4E-F, page 4 Original Western blots Prdm16csp1/wt, females, 8 months



Supplement Figure 4E-F, page 5

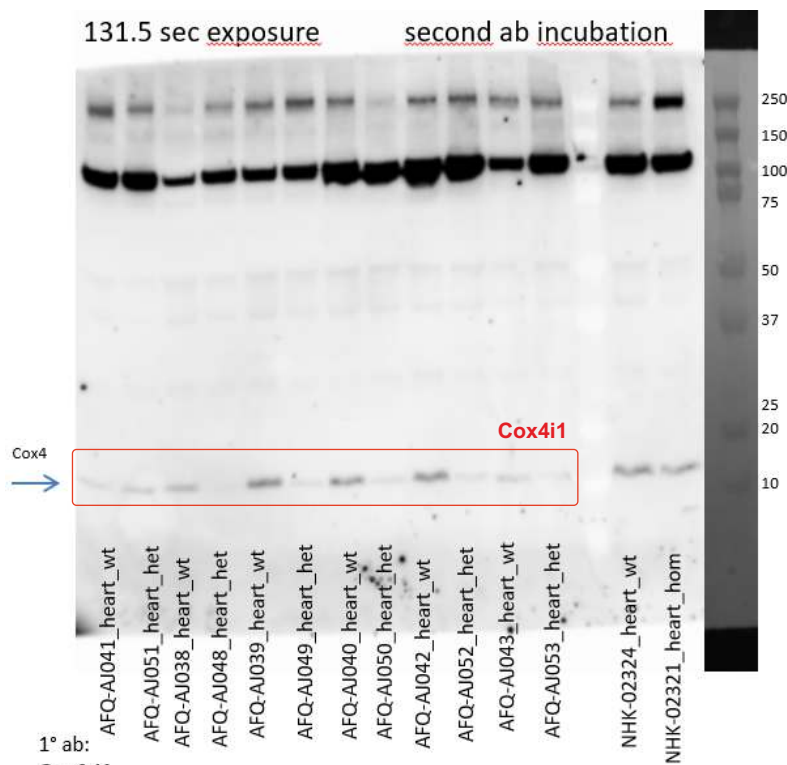
Original Western blots Prdm16csp1/wt, females, 8 months



1° ab:
anti-HSP70
(Enzo, ADI-SPA-820), 1:1000 in 5% milk/TBST (72-73 kDa)

1° ab:
anti-GAPDH
(Ambion, AM4300), 1:20000 in 5% milk/TBST (37 kDa)

1° ab:
Hsp60 (R&D systems MAB1800), 62kDa 1:2000 in 5% milk/TBST



1° ab:
Cox4-I1
(R&D Systems AF5814), 1:200 in 5% milk/TBST (18 kDa)