

Supplementary Table 1

	acute COVID symptoms (<14 days)	chronic symptoms (>6 Months)	interval between acute symptoms and chronic symptoms (days)	days between acute symptom onset and biopsy (days)	comorbidities	ME-CFS (CCC)	immuno-suppressive treatment	relevant lab findings	heart MRI
PCS-1	loss of taste and smell	Muscular weakness, fatigue, PEM, dysbalance	24	452	recurring sinusitis	no	none		
PCS-2	loss of taste and smell, dyspnea, fatigue, arthralgia, cough, rhinitis, hearing impairment, gait disturbance, myalgia, sore throat, cognitive impairment, sleep disturbance, tracheobronchitis	fatigue, PEM, cognitive impairment (memory), dyspnea, burning pain with focus on joints, distal arms and legs	0	398	Lyme disease, facial paralysis, hypothyroidism	yes	Prednisolon		
PCS-3	fatigue, dyspnea, headaches, vertigo/dizziness, cough, chest pain/tightness, vomiting/nausea, numbness (legs, body)	shivering, pain (NRS 3), cramps, exercise intolerance, PEM	0	437	Asthma, endometriosis, hypothyroidism, neurodermatitis	no	none		
PCS-4	loss of taste and smell, fatigue, tachycardia, body aches, chest pain, back pain, fatigue, subfebrile temperature, rhinitis, sweating	fatigue, PEM, myalgia	0	457		yes	none	MBL-deficiency, ANA 1:1280, IgG3 subclass deficiency	05/2020: apical pericarditis 02/2021: normal appearance
PCS-5	loss of taste and smell, dyspnea, cough, fever, vertigo, myalgia, body aches	muscular weakness, myalgia, pronounced on arms, PEM	39	225	Arterial hypertension, multiple torn ligaments	no	none		diffuse fibrotic changes
PCS-6	loss of taste and smell, fatigue, mild dyspnea, chest pain/tightness, fever, sore throat, rhinitis, headaches, chills, night sweat	muscular weakness (full body), PEM	30	425	POTS	no	none		
PCS-7	fatigue, myalgia, arthralgia, joint swelling	myalgia, PEM, paresthesia, distal paresis arms, unclassified tremor, hair loss, fatigue, cognitive impairment (Concentration, memory)	31	501	Raynaud's phenomenon, primary biliary cholangitis, Polyarthritits	no	Prednisolon; azathioprin; methotrexat	anti-AMA-M2 positive	
PCS-8	headaches, cognitive impairment	Fatigue, myalgia, PEM, cognitive impairment (concentration), sleep disturbance	0	233	Arterial hypertension	no	none		
PCS-9	fatigue, headaches, myalgia/body aches, arthralgia, fever, rhinitis, cough, sore throat	Fatigue, Myalgia, PEM, cognitive impairment (concentration, memory, speech), sleep disturbances, headaches, arthralgias	13	260		yes	none	MBL-deficiency	
PCS-10	loss of taste and smell, headaches, body aches, arthralgia, myalgia, cognitive impairment	Myalgia, PEM, fatigue, hyposmia, sleep disturbances, cognitive impairment, headaches	18	339		yes	none		
PCS-11	Dyspnea requiring non-invasive highflow ventilation for 4 days, fever, cough	Persisting Dyspnea (NHYA II), PEM, exercise intolerance, fatigue, headaches, myalgia, arthralgia, heart palpitations, cognitive impairment (memory, concentration, lacking words), sleep disturbance	27	342	Class III obesity	yes	none		dilated cardiomyopathy
age (mean)	45.1								
age (median)	49.0								
HDC-1	/	Proximal muscular weakness				/	none		/
HDC-2	/	Myalgia and muscular weakness legs, intermittent muscle spasms/stiffness			WPW-Syndrome; Tachycardia, aortic aneurysm; hypercholesterolemia	/	none		/
HDC-3	/	Unclear movement disorder. Suspected mitochondriopathy was ruled out histopathologically.			tobacco consumption, unclassified tremor	/	none		/
HDC-4	/	Muscle hypertrophy right leg of unknown origin; suspected hereditary muscle disease was ruled out				/	none		/
HDC-5	/	Proximally pronounced progressive muscular weakness and myalgia			Depression, Neurodermatitis, Spondylarthritis	/	none		/
HDC-6	/	Exercise intolerance, Post-exertional malaise; muscle cramps and stiffness				/	none		/
HDC-7	/	General muscular weakness; unilateral ptosis			Myocarditis (in teenage years)	/	none	ANA 1:160; anti-SOX-1 antibodies	/
HDC-8	/	Proximal myalgia and muscular weakness				/	none		/
age (mean)	42.6								
age (median)	45.0								
2BA-1	/	Focal epilepsy, progressive global cerebral atrophy. Suspected mitochondriopathy was ruled out histopathologically.				/	none	ANA 1:160	/
2BA-2	/	Proximal muscular weakness			Arterial hypertension, smoking	/	none		/
2BA-3	/	Exercise-dependent myalgia				/	none		/
2BA-4	/	Exercise-dependent muscle weakness. Suspected mitochondriopathy was ruled out histopathologically.			arterial hypertension, hypercholesterolemia, psoriatic arthritis, epilepsy	/	none		/
2BA-5	/	Muscular weakness (arms and legs)			arterial hypertension, migraine,	/	none		/
2BA-6	/	proximal muscular weakness (legs); myalgia				/	none		/
2BA-7	/	Exercise-dependent proximal myalgia (legs)			arterial hypertension	/	none		/
2BA-8	/	Myalgia and proximal weakness (legs)			tobacco consumption, peripheral artery disease, aortic aneurysm	/	none		/
age (mean)	44.6								
age (median)	44.5								

Abbreviations: PCS = Post-COVID syndrome; PEM = post-exertional malaise; NRS= numeric rating scale; NHYA = New York Heart Association Functional Classification of heart insufficiency; ME-CFS = Myalgic encephalomyelitis / chronic fatigue syndrome; CCC= Canadian consensus criteria; POTS = Postural orthostatic tachycardia syndrome; MBL-deficiency= Mannan-binding lectin deficiency; ANA = antinuclear antibodies; anti-AMA-A2 = Anti-mitochondrial antibody; WPW = Wolff-Parkinson-White Syndrome.

Fig. S1

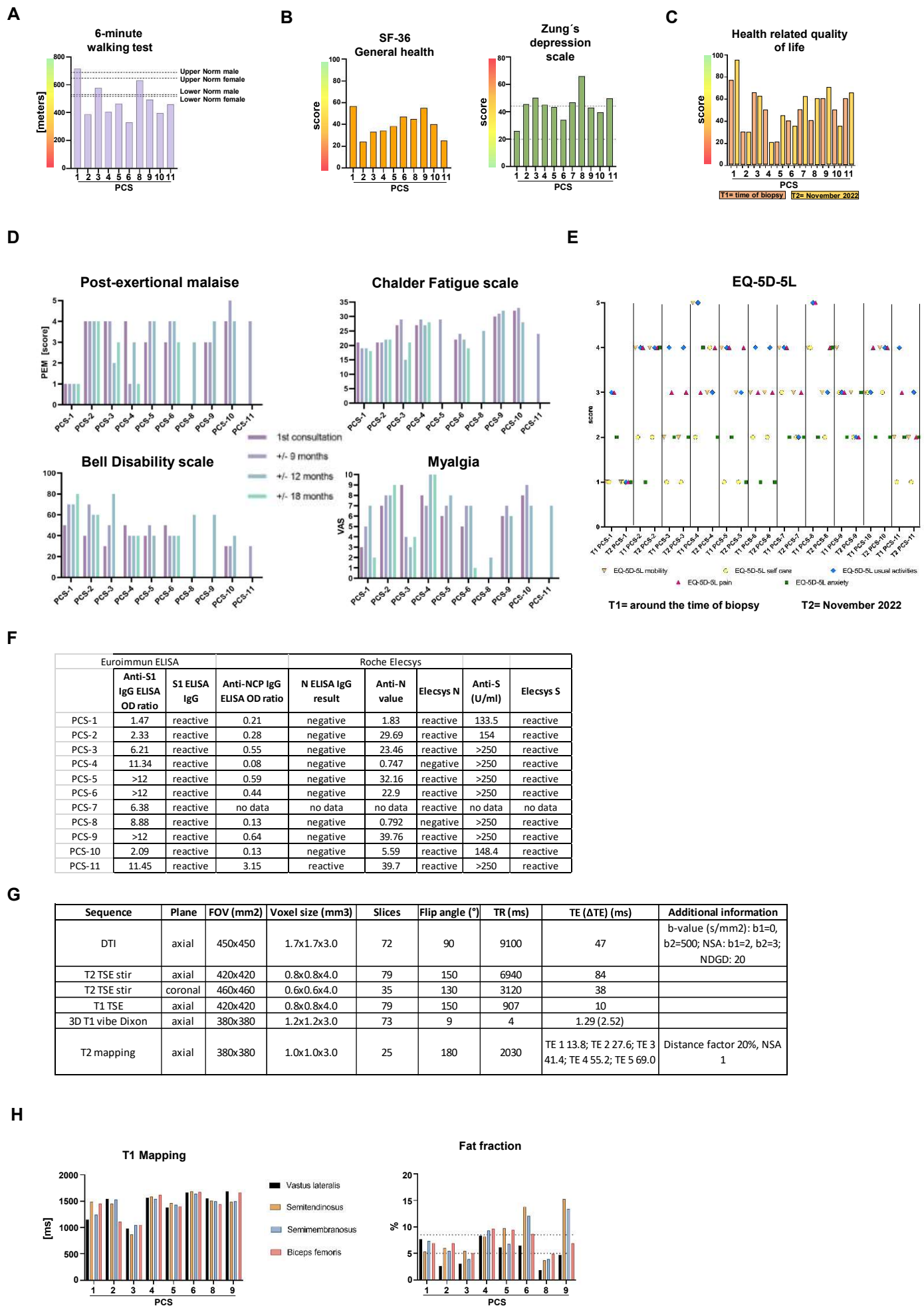


Fig. S2

PCS-1

Antigen	Intensität	Klasse	o	(+)	+	++	+++
Mi-2alpha (Mi-2a)	4	o					
Mi-2beta (Mi-2b)	4	o					
TIF1gamma (TIF1g)	1	o					
MDA5 (MDA5)	4	o					
NXP2 (NXP2)	3	o					
SAE1 (SAE1)	3	o					
Ku (Ku)	2	o					
PM-Scl100 (PM100)	3	o					
PM-Scl75 (PM75)	3	o					
Jo-1 (Jo-1)	1	o					
SRP (SRP)	8	(+)					
PL-7 (PL-7)	4	o					
PL-12 (PL-12)	3	o					
EJ (EJ)	3	o					
OJ (OJ)	3	o					
Ro52 (Ro52)	1	o					

PCS-6

Antigen	Intensität	Klasse	o	(+)	+	++	+++
Mi-2alpha (Mi-2a)	4	o					
Mi-2beta (Mi-2b)	1	o					
TIF1gamma (TIF1g)	0	o					
MDA5 (MDA5)	6	o					
NXP2 (NXP2)	3	+					
SAE1 (SAE1)	5	o					
Ku (Ku)	1	o					
PM-Scl100 (PM100)	23	+					
PM-Scl75 (PM75)	3	o					
Jo-1 (Jo-1)	2	o					
SRP (SRP)	5	o					
PL-7 (PL-7)	16	+					
PL-12 (PL-12)	3	o					
EJ (EJ)	4	o					
OJ (OJ)	4	o					
Ro52 (Ro52)	2	o					

PCS-2

Antigen	Intensität	Klasse	o	(+)	+	++	+++
Mi-2alpha (Mi-2a)	2	o					
Mi-2beta (Mi-2b)	3	o					
TIF1gamma (TIF1g)	0	o					
MDA5 (MDA5)	3	o					
NXP2 (NXP2)	3	o					
SAE1 (SAE1)	2	o					
Ku (Ku)	2	o					
PM-Scl100 (PM100)	0	o					
PM-Scl75 (PM75)	2	o					
Jo-1 (Jo-1)	3	o					
SRP (SRP)	3	o					
PL-7 (PL-7)	3	o					
PL-12 (PL-12)	1	o					
EJ (EJ)	2	o					
OJ (OJ)	1	o					
Ro52 (Ro52)	4	o					

PCS-8

Antigen	Intensität	Klasse	o	(+)	+	++	+++
Mi-2alpha (Mi-2a)	2	o					
Mi-2beta (Mi-2b)	3	o					
TIF1gamma (TIF1g)	0	o					
MDA5 (MDA5)	5	o					
NXP2 (NXP2)	2	o					
SAE1 (SAE1)	4	o					
Ku (Ku)	2	o					
PM-Scl100 (PM100)	0	o					
PM-Scl75 (PM75)	4	o					
Jo-1 (Jo-1)	1	o					
SRP (SRP)	3	o					
PL-7 (PL-7)	2	o					
PL-12 (PL-12)	2	o					
EJ (EJ)	2	o					
OJ (OJ)	3	o					
Ro52 (Ro52)	1	o					

PCS-3

Antigen	Intensität	Klasse	o	(+)	+	++	+++
Mi-2alpha (Mi-2a)	4	o					
Mi-2beta (Mi-2b)	3	o					
TIF1gamma (TIF1g)	1	o					
MDA5 (MDA5)	3	o					
NXP2 (NXP2)	3	o					
SAE1 (SAE1)	3	o					
Ku (Ku)	4	o					
PM-Scl100 (PM100)	2	o					
PM-Scl75 (PM75)	4	o					
Jo-1 (Jo-1)	1	o					
SRP (SRP)	13	(+)					
PL-7 (PL-7)	3	o					
PL-12 (PL-12)	7	o					
EJ (EJ)	2	o					
OJ (OJ)	10	(+)					
Ro52 (Ro52)	2	o					

PCS-9

Antigen	Intensität	Klasse	o	(+)	+	++	+++
Mi-2alpha (Mi-2a)	6	o					
Mi-2beta (Mi-2b)	2	o					
TIF1gamma (TIF1g)	1	o					
MDA5 (MDA5)	4	o					
NXP2 (NXP2)	3	o					
SAE1 (SAE1)	2	o					
Ku (Ku)	4	o					
PM-Scl100 (PM100)	2	o					
PM-Scl75 (PM75)	18	+					
Jo-1 (Jo-1)	1	o					
SRP (SRP)	7	+					
PL-7 (PL-7)	3	o					
PL-12 (PL-12)	28	+					
EJ (EJ)	1	o					
OJ (OJ)	5	o					
Ro52 (Ro52)	3	o					

PCS-4

Antigen	Intensität	Klasse	o	(+)	+	++	+++
Mi-2alpha (Mi-2a)	4	o					
Mi-2beta (Mi-2b)	4	o					
TIF1gamma (TIF1g)	1	o					
MDA5 (MDA5)	4	o					
NXP2 (NXP2)	5	o					
SAE1 (SAE1)	3	o					
Ku (Ku)	2	o					
PM-Scl100 (PM100)	6	o					
PM-Scl75 (PM75)	7	o					
Jo-1 (Jo-1)	2	o					
SRP (SRP)	6	o					
PL-7 (PL-7)	4	o					
PL-12 (PL-12)	2	o					
EJ (EJ)	5	o					
OJ (OJ)	2	o					
Ro52 (Ro52)	0	o					

PCS-10

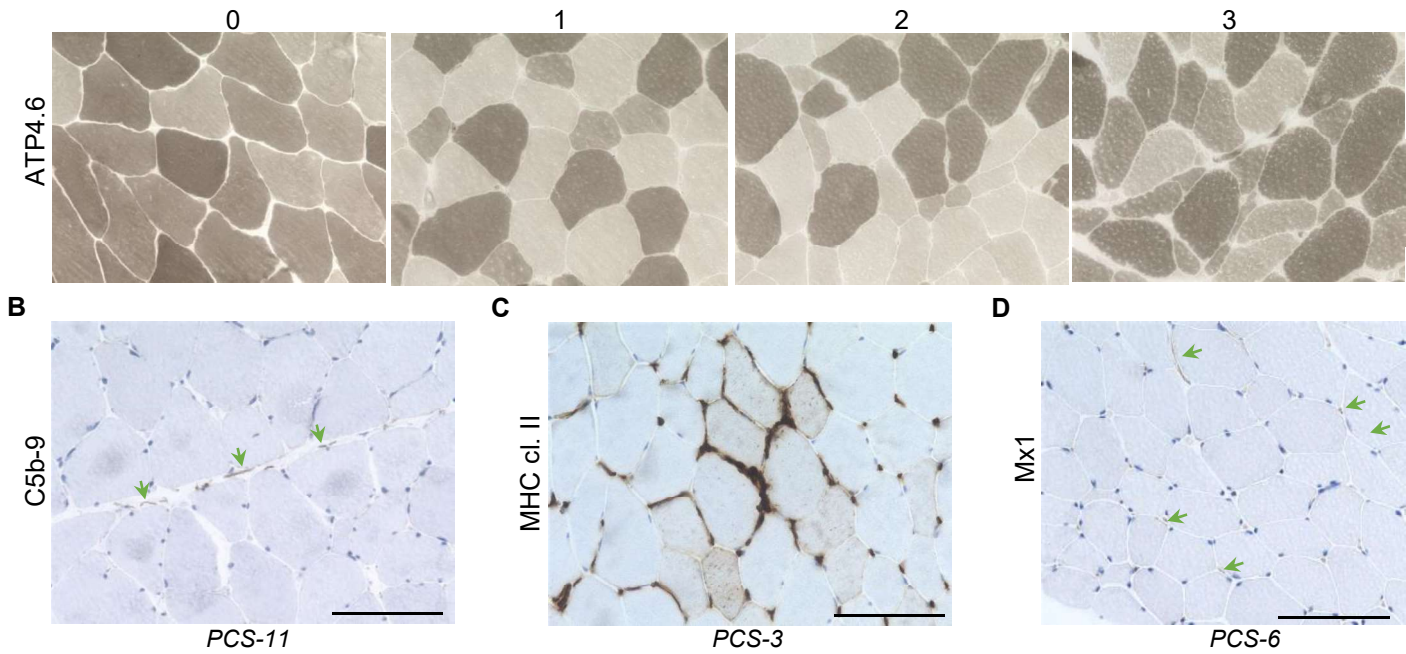
Antigen	Intensität	Klasse	o	(+)	+	++	+++
Mi-2alpha (Mi-2a)	3	o					
Mi-2beta (Mi-2b)	2	o					
TIF1gamma (TIF1g)	1	o					
MDA5 (MDA5)	5	o					
NXP2 (NXP2)	5	o					
SAE1 (SAE1)	2	o					
Ku (Ku)	1	o					
PM-Scl100 (PM100)	1	o					
PM-Scl75 (PM75)	1	o					
Jo-1 (Jo-1)	1	o					
SRP (SRP)	5	o					
PL-7 (PL-7)	6	(+)					
PL-12 (PL-12)	2	o					
EJ (EJ)	2	o					
OJ (OJ)	2	o					
Ro52 (Ro52)	2	o					

PCS-5

Antigen	Intensität	Klasse	o	(+)	+	++	+++
Mi-2alpha (Mi-2a)	4	o					
Mi-2beta (Mi-2b)	1	o					
TIF1gamma (TIF1g)	0	o					
MDA5 (MDA5)	6	o					
NXP2 (NXP2)	3	o					
SAE1 (SAE1)	5	o					
Ku (Ku)	1	o					
PM-Scl100 (PM100)	23	+					
PM-Scl75 (PM75)	3	o					
Jo-1 (Jo-1)	2	o					
SRP (SRP)	5	o					
PL-7 (PL-7)	16	+					
PL-12 (PL-12)	3	o					
EJ (EJ)	4	o					
OJ (OJ)	4	o					
Ro52 (Ro52)	2	o					

Fig. S3

A Type 2b atrophy fiber score



E

	FSV	groups	Type 2b atrophy (score)	Type 1 Fibers (%)	Type 2 Fibers (%)	necrotic fibers	C5b-9	MHC cl. I	MHC cl. II	MxA	CD68+	CD45+	CD8+	CD169+	CD206+
HDC-1	-	-	0	80	20	0	-	1	0	-	20	1	2	4	49
HDC-2	-	-	0	50	50	0	-	0	0	-	43	22	3	13	36
HDC-3	-	-	0	75	25	0	-	0	0	-	23	14	2	20	30
HDC-4	-	-	0	45	55	0	-	0	0	-	28	8	2	8	41
HDC-5	-	-	0	45	55	0	-	1	0	-	34	5	0	18	3
HDC-6	(+)	-	0	70	30	0	-	0	0	-	52	8	1	33	28
HDC-7	(+)	-	0	70	30	0	-	0	0	-	16	5	0	13	16
HDC-8	-	-	0	60	40	0	-	0	0	-	38	7	1	28	45
mean				62	38						32	9	1	17	31
SD				14	14						12	6	1	10	15
2BA-1	(+)	-	2	30	70	0	-	0	-	-	63	25	2	42	62
2BA-2	+	-	3	50	50	0	-	1	-	-	33	14	1	35	38
2BA-3	+	-	2	25	75	0	-	0	-	-	42	5	1	15	24
2BA-4	+	-	2	75	25	0	-	0	-	-	18	6	0	13	38
2BA-5	(+)	-	2	45	55	0	-	0	-	-	37	8	1	18	40
2BA-6	(+)	-	2	70	30	0	-	0	-	-	31	4	0	13	21
2BA-7	(+)	-	2	55	45	0	-	0	-	-	12	3	0	14	15
2BA-8	(+)	-	1	60	40	0	-	0	-	-	32	15	1	24	29
mean				51	49						34	10	1	22	33
SD				18	18						15	8	1	11	15
PCS-1	+	-	1	60	40	0	-	0	-	-	71	19	0	59	49
PCS-2	+	-	2	60	40	0	-	0	-	-	60	12	1	28	46
PCS-3	+	-	1	50	50	0	-	2	+	-	60	15	7	49	58
PCS-4	+	-	1	70	30	1	-	0	-	(+)	82	15	0	61	12
PCS-5	+	-	2	70	30	0	-	0	-	-	32	23	0	24	19
PCS-6	+	(+)	2	50	50	0	-	1	-	+(cap)	70	19	0	49	12
PCS-7	+	-	1	70	30	0	-	1	-	-	55	13	0	45	20
PCS-8	(+)	-	0	60	40	0	-	0	-	-	38	9	1	29	54
PCS-9	+	-	0	75	25	0	-	1	-	-	47	11	3	29	17
PCS-10	+	-	3	50	50	0	-	2	(+)	-	47	12	4	36	61
PCS-11	+	-	2	80	20	0	+(cap)	0	-	-	73	10	4	44	44
mean				63	37						58	14	2	41	36
SD				11	11						16	4	2	13	20

FSV (Fiber size variation)

- physiological
(+) mildly increased
+ increased

Type 2b atrophy score

0 no atrophy
1 <15% of type 2b fibers
2 15-60% of type 2b fibers
3 >60% of type 2b fibers

MHC cl. I & II score

0 no positive fibers
1 <20%
2 20-50%
3 >50%

cap = capillary expression only

F

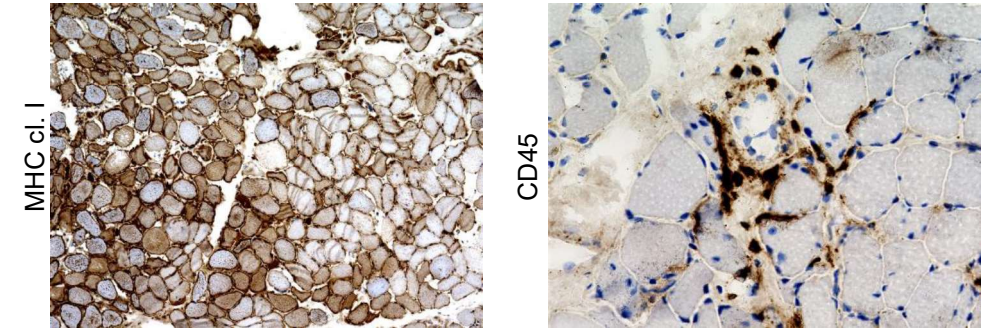


Fig. S4

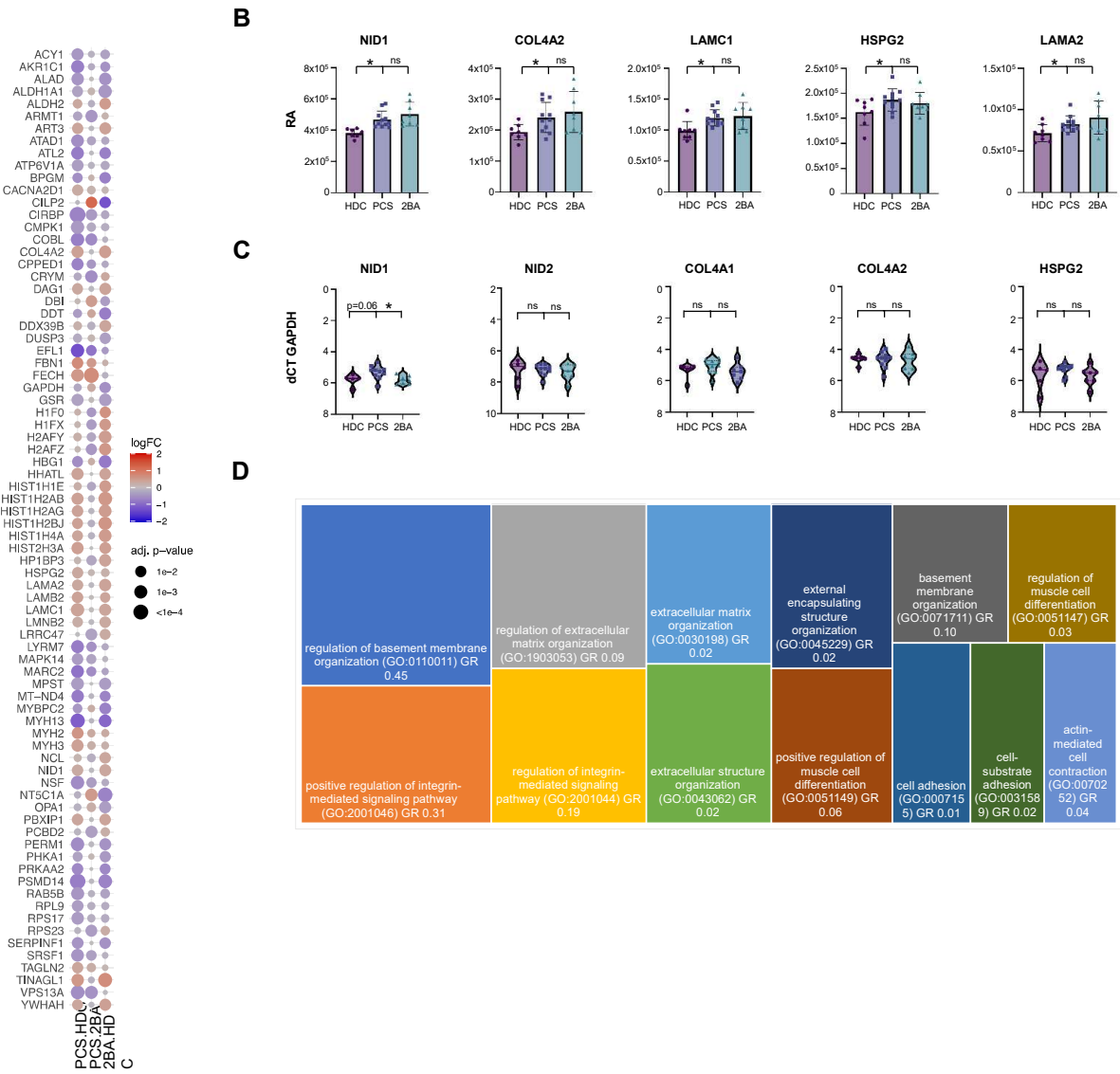


Fig. S5

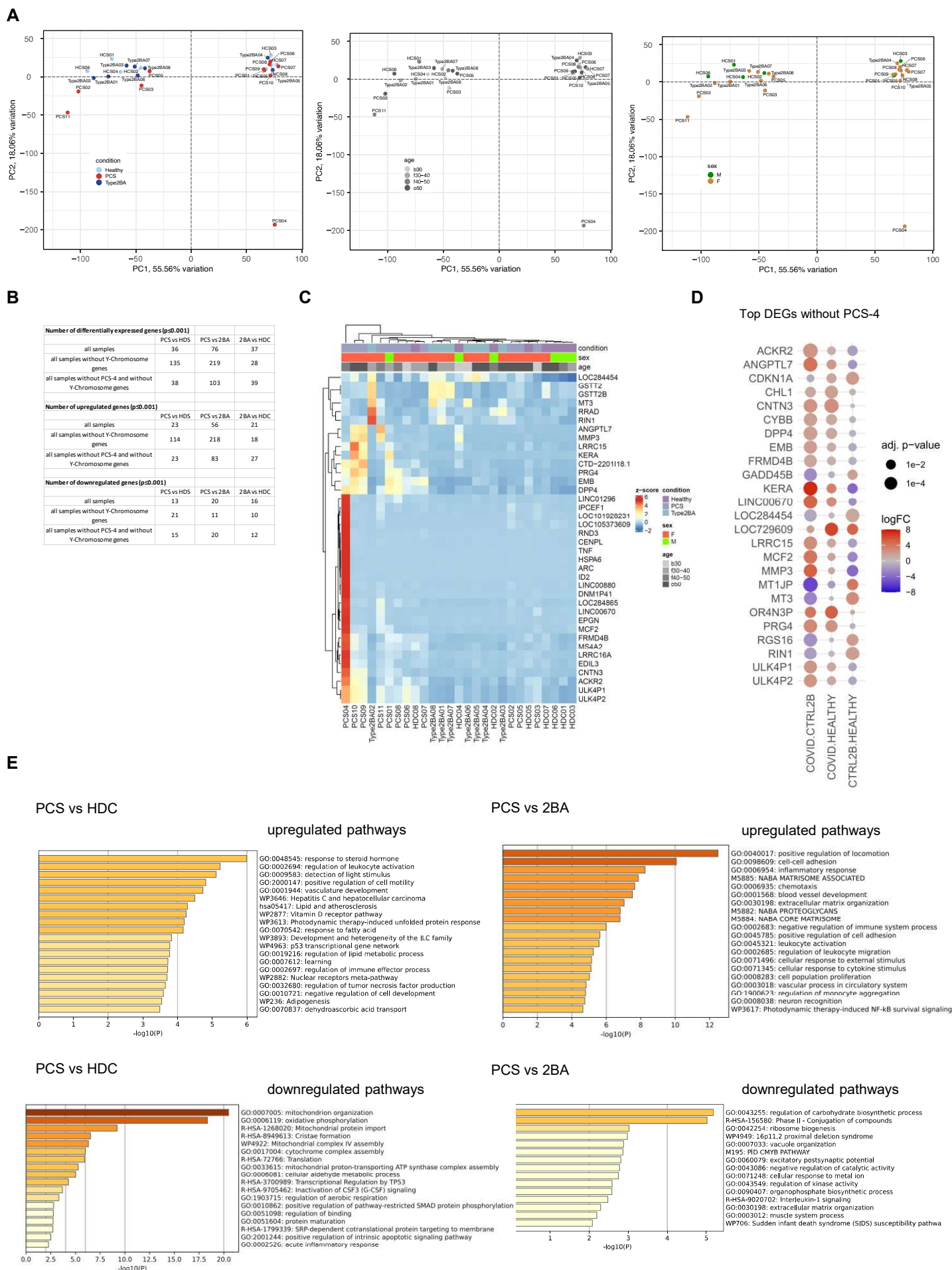


Fig. S6

